



# FUSION BATTERY

LITHIUM

## V-LFP-24-200EV

**BLUE TOOTH**

### LITHIUM IRON PHOSPHATE BATTERY

## PERFORMANCE

- Long Cycle Life > 2000 cycles @ 100% DOD.
- High Density, High Discharge Current, High Temperature Range.
- Low Weight, Free Maintenance.
- Fast Charging.
- Environment Friendly.

## FEATURES

- Lithium Iron Phosphate (**LiFePO4**).
- Integrated Battery Management System (BMS).
- Bluetooth APP

## BATTERY DATA SHEET

### Electrical Parameters

Nominal Voltage	25.6V
Rated Capacity	200Ah
Energy	5120Wh
Resistance	≤ 30mΩ
Efficiency	99%
Cycle Life	> 2000 cycles @ 1C, 100% DOD
Self Discharge	2% per Month
Max. Modules in Series/Parallel	2S/20P

### Mechanical Parameters

Dimension (L x W x H)	522 x 268 x 224 mm
	20.55 x 10.55 x 8.82"
Weight	36.5kg (80.47lbs)
Terminal Type	M8
Battery Housing	ABS, UL-94 V-0
Housing Protection	IP65
Cell Type-Chemistry	LiFePO4 Cell
SOC Display (Optional)	None

### Discharge Parameters

Continuous Discharge Current	150A
Peak Discharge Current	450A (5 seconds)
Recommended Volt. Disconnect	20V
BMS Discharge Cut-off Voltage	16V
Reconnect Voltage	18.4V
Short Circuit Protection	200~600 us

### Charge Parameters

Charge Method	CC-CV
Charge Voltage	28.8~29.6V
Recommended Float Voltage	27.6V
Recommended Charge Current	40A
Maximum Charge Current	150A
BMS Charge Cut-off Voltage	31.2V

### Compliance Certificate

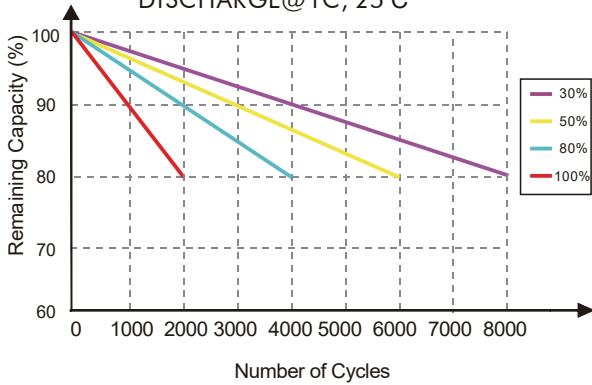
Certifications	UL1642 (CELL)
	CE
	IEC62133 & CB
	KC
	BIS
Shipping Classification	UN3480, Class 9, UN38.3

### Temperature Parameters

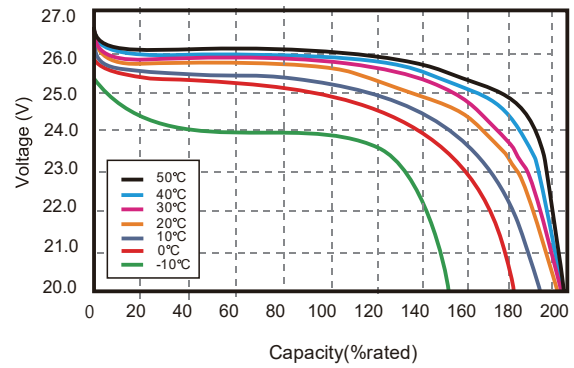
Discharge Temperature	-20 to 60°C (-4 to 140°F)
Charge Temperature	0 to 45°C (32 to 113°F)
Storage Temperature	-25 to 60°C (-13 to 140°F)
BMS Low Temperature Cut-off	-10°C (14°F)
BMS Low Temperature Turn-On	0°C (32°F)
BMS High Temperature Cut-off	65°C (149°F)
BMS High Temperature Turn-On	55°C (131°F)

## Performance Characteristics

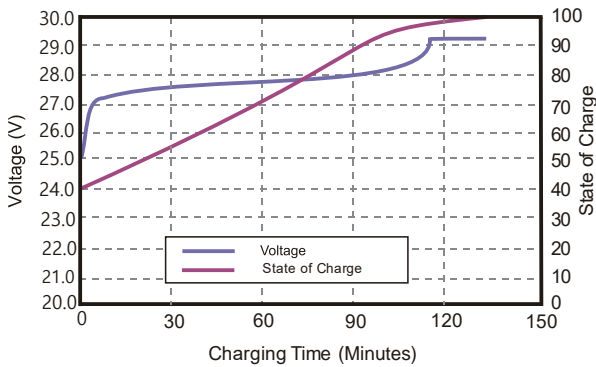
CYCLE LIFE vs. DEPTH OF DISCHARGE(DOD)  
DISCHARGE@1C, 25°C



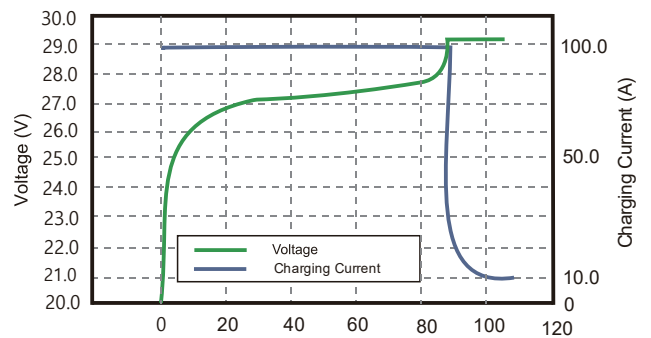
DISCHARGE CAPACITY at VARIOUS TEMPERATURES  
DISCHARGE @1C, 25°C



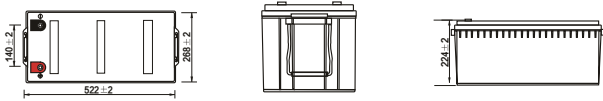
STATE OF CHARGE CURVE @0.5C, 25°C



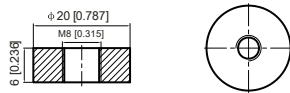
CHARGING CHARACTERISTICS @0.5C, 25°C



### Battery Dimension



M8 - 1.0x 8mm  
Threaded Hole



View live data with the intelligent Fusion Lithium Bluetooth 4.0 BLE technology.

Find the identification code on top of Fusion Lithium battery. Open the Fusion Lithium App and click relevant code to connect.

- Access your BMS independently with multiple batteries
- Monitor the status of your lithium battery: State Of Charge (SOC), temperature, charging or discharging current, etc
- Track the Cycle Life of your Lithium Battery
- Assess what protections have been triggered



### Battery Applications

- + Data Center UPS
- + Telecom Backup Power
- + Military Power Supply
- + Solar Energy Storage System
- + Solar Street LED Lightings
- + Autonomously Guided Vehicles (AGVs)
- + Industrial Robotics & Handling Equipment
- + Aerial Work Platform
- + Floor Cleaning Machines
- + Power Tools, Lawn Mower
- + Electric Bike & Motorcycles
- + Electric Mobilities( E-scooters, Wheelchair)
- + Golf Trolley & Golf Carts
- + Medical Devices
- + Electric Ships
- + Passenger Vehicles

NOTE:

Do Not Mix With Sealed Lead Acid Batteries When Recycling. See FUSION User's Manual for Proper Operation. Fusion Lithium BATTERIES. All Rights Reserved.

