



# SY8GC-190 (8V/190AH)

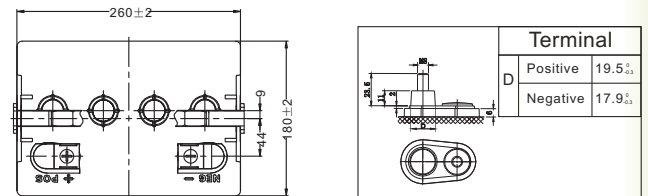
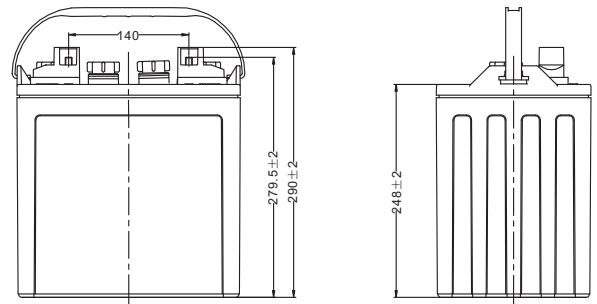
## Physical Specification

Nominal Voltage	8V
Nominal Capacity(20HR)	190Ah
Nominal Capacity(5HR)	155Ah
Length	260±2mm(10.24inches)
Width	180±2mm(7.09inches)
Container Height	248±2mm(9.76inches)
Total Height	279.5±2mm(11.00inches)
Dry Weight	Approx 24.5Kg(54.0lbs)
Wet Weight	Approx 31.5Kg(69.4lbs)
Acid	1.280±0.015g/cm <sup>3</sup> (25°C)
Standard Terminal	DT-M8(A)
Container Material	PP

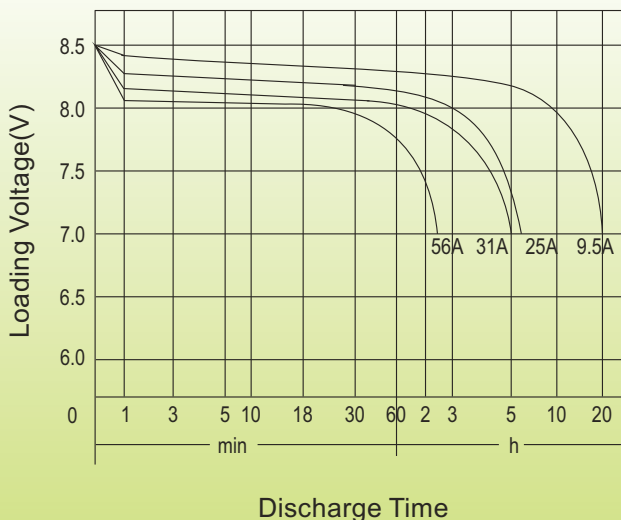


## Electrical Specification

Rated Capacity	20 hour rate(9.5A)	190Ah
	5 hour rate(31A)	155Ah
Reserve Capacity	25Amps	340min
	56Amps	132min



## Discharge Characteristics(25°C , 77°F )



## Charge Method

### Initial Charge:

- ①0.1C<sub>20</sub> (A) charging 15h
- ②0.05C<sub>20</sub> (A) charging 10h

The temperature of the battery should be below 50°C during charging.

### Supplement Charge:

- a)Charging at a constant voltage of 9.8~10V/cell and a limited current 0.25C (A) until the electrolyte density up to 1.280g/cm<sup>3</sup> (30) and the current does not change for 3 hours.
  - b)Charge with constant current 0.1C (A) until the voltage between 10.4~11.2V/cell, and voltage maintains for 3 hours and not change.
- Two method optional